

PLACE PIN HERE



SERVICE BULLETIN



CERTAINTY: IN CONCRETE

SAFETY FIRST: Always remove keys and lock off power before carrying out any maintenance

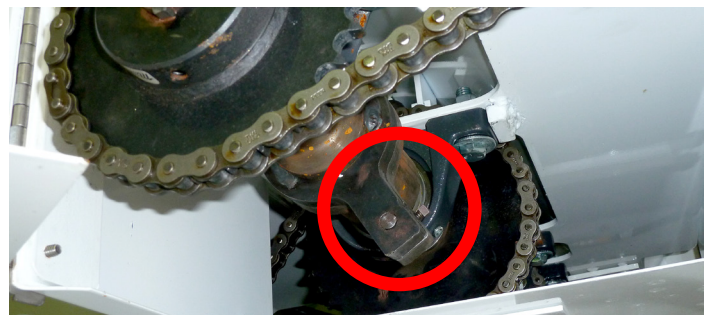
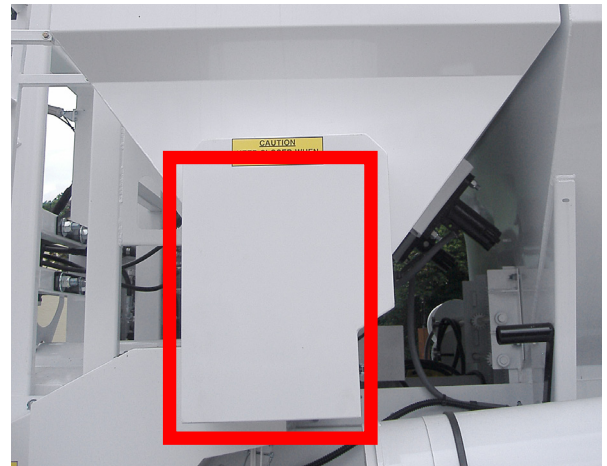
CEMENT FLOW PROBLEMS?

Check your Shear Pin

Located behind the cement drive cover

Shear pins are designed to break before your machine does!

They are easy to find and change



TECH TIPS

Disengage power before opening covers
Always disengage the cement clutch when replacing the shear pin

Carrying spare shear pins can help reduce machine down time



www.youtube.com/user/armcontechtips

SERVICE LINE : 01625 856 699

www.armcon.com

service@armcon.com